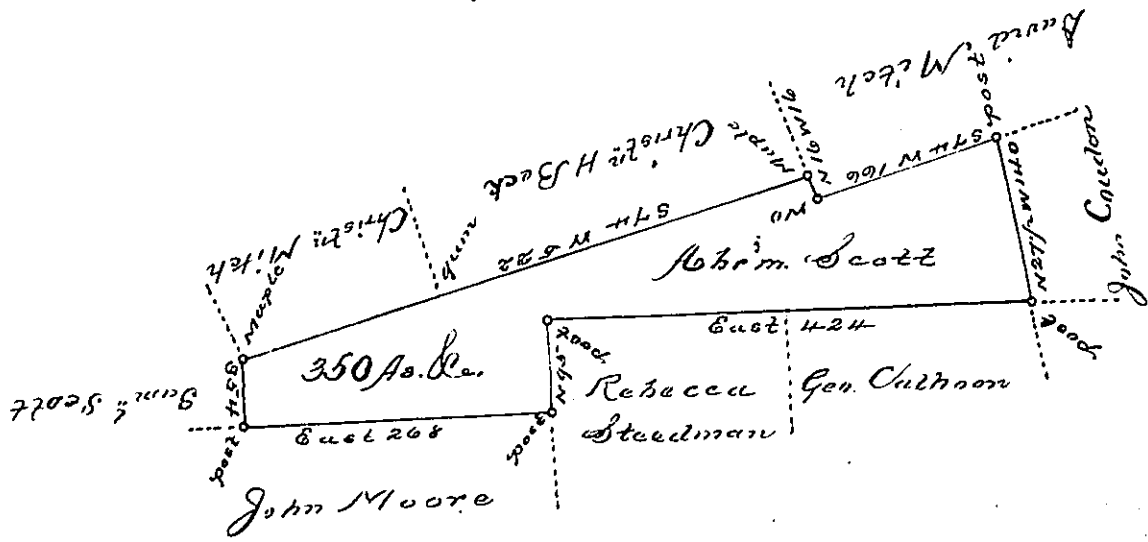


Foster -
Luzerne.



$$\begin{array}{r} 7K 1/4 \\ 24 1/2 \\ \hline 101 1/2 \end{array}$$

No Draft of a tract of land called *Situate joining land survey of*
Sam^r Scott in the County of Luzerne, containing three Hundred fifty
acres & Allors. Surveyed for Abraham Scott the 3^d day of October 1793.
by Virtue of a warrant dated the 13th day of June 1793.

by *Wm. Gray D.S.*

To *Daniel Brodhead Esq^r*
Surv^r Gen^r

IN TESTIMONY that the above is a copy of the original remaining on file in the
 Department of Internal Affairs of Pennsylvania, made con-
 formably to an Act of Assembly approved the 16th day of
 February, 1833. I have hereunto set my Hand and caused
 the Seal of said Department to be affixed at Harrisburg, this

third day of December, 1895,

James W. Pitts
 Secretary of Internal Affairs.